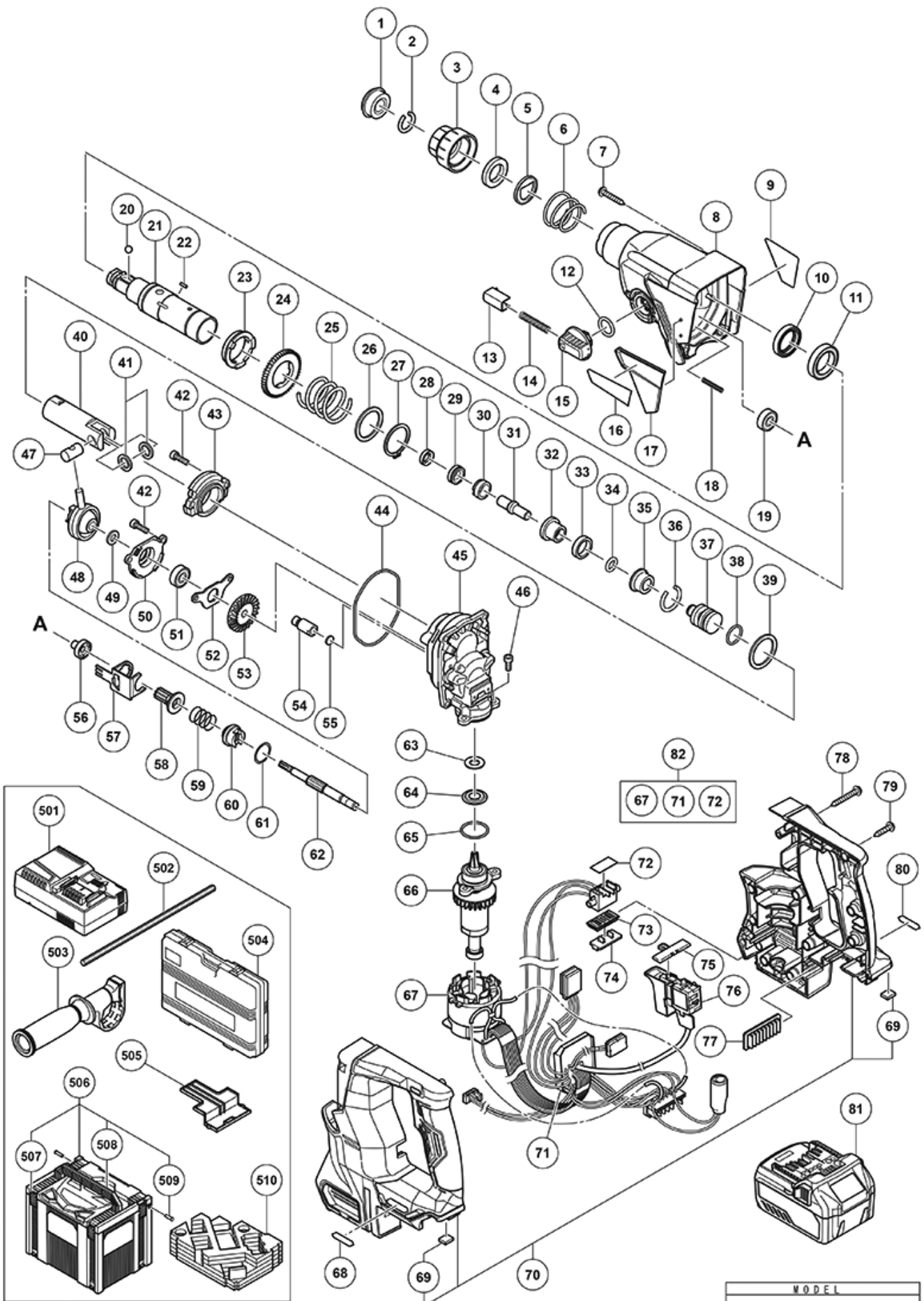


n°	Article	Quantité utilisée
*81	371750 BATTERY BSL 36A18 (EUROPE.AUS.NZL)	2
*81	372120 BATTERY BSL 36B18 (EUROPE.AUS.NZL)	2
1	306345 FRONT CAP	1
2	306340 STOPPER RING	1
3	324527 GRIP	1
4	371326 BALL HOLDER (FW)	1
5	324526 HOLDER PLATE (OLD 322811)	1
6	322812 HOLDER SPRING	1
7	370307 TAPPING SCREW D5 (W/FLANGE) NEW	4
8	370306 GEAR COVER ASS'Y NEW	1
10	335259 OIL SEAL	1
11	335260 BALL BEARING 6805DD	1
12	878885 O-RING (S-18)	1
13	322789 PUSHING BUTTON	1
14	317223 PUSHING SPRING	1
15	334011 CHANGE LEVER	1
17	370308 HITACHI PLATE NEW	1
18	335800 SPRING (E)	1
20	335300 STEEL BALL D7.0 (10 PCS)	1
21	335261 CYLINDER	1
22	335264 PIN D2.5	4
23	335263 CYLINDER CLUTCH	1
24	335265 SECOND GEAR	1
25	335266 SPRING (A)	1
27	948310 RETAINING RING FOR D30 SHAFT	1
28	335262 OIL SEAL (A)	1
29	335268 HAMMER HOLDER (C)	1
30	335795 SLEEVE (FW)	1
31	335269 SECOND HAMMER	1
32	335267 HAMMER HOLDER (A)	1
33	322805 DAMPER (A)	1
34	322808 O-RING (C)	1
35	324524 DAMPER HOLDER (OLD 322806)	1
36	322807 STOPPER RING	1
37	372815 STRIKER NEW	1
38	372816 O-RING NEW	1
39	301679 WASHER (A)	1
40	372817 PISTON NEW	1

n°	Article	Quantité utilisée
41	335794 PISTON WASHER	2
42	990079 SEAL LOCK HEX. SOCKET HD. BOLT M5X16	4
43	370309 INNER COVER (B) NEW	1
44	370310 O-RING NEW	1
45	370311 INNER COVER (A) NEW	1
46	877839 SEAL LOCK HEX. SOCKET HD. BOLT M5X10	2
47	335793 PISTON PIN	1
48	335249	1
49	335250 BEARING WASHER	1
50	370312 BEARING HOLDER (B) NEW	1
51	608VVM BALL BEARING 608VVC2PS2L	1
52	370313 BEARING COVER (A) NEW	1
53	370314 BEVEL GEAR (A) NEW	1
54	334008 AIR CAP	1
55	324543 FELT PACKING (A)	1
56	335275 PINION SLEEVE	1
57	335276 LOCK PLATE	1
58	335278 SECOND PINION	1
59	323182 CLUTCH SPRING	1
60	335254 CLUTCH	1
61	331315 WASHER	1
62	335277 SECOND SHAFT	1
63	370315 FELT PACKING NEW	1
64	370316 PACKING WASHER NEW	1
65	872470 O-RING (S-26)	1
66	361072 ROTOR (B) NEW	1
67	340981 STATOR NEW	1
69	370321 DAMPER (A) NEW	2
72	370327 RUBBER CUSHION NEW	1
73	370545 TERMINAL RUBBER BASE NEW	1
74	371715 TERMINAL COVER (A) NEW	1
75	324225 PUSHING BUTTON (B)	1
76	370322 DC-SPEED CONTROL SWITCH NEW	1
77	370328 BUTTERY RUBBER (B) NEW	1
78	306664 TAPPING SCREW D4X40 W/FLANGE	1
79	301653 TAPPING SCREW (W/FLANGE) D4X20 (BLACK)	11
82	372867 WIRING ASS'Y NEW	1
502	303709 DEPTH GAUGE	1

n°	Article	Quantité utilisée
503	335273 SIDE HANDLE	1
504	373134 PLASTIC CARRYING CASE NEW	1
505	329897 BATTERY COVER	1
507	336472 LATCH	4
508	336473 HANDLE (HSC) NEW	1
509	336474 HINGE	2
603	303335 RUBBER CAP	1
607	331966 FLAT HD. SCREW (LEFT HAND) M6X20	1
610	971787 DUST CUP	1
611	931844 STOPPER	1
617	306885 DUST COLLECTOR (B) ASS'Y	1
618	306910 SOCKET ADAPTOR (B)	1
621	335782 GREASE FOR ROTARY HAMMER (60G)	1
622	335781 GREASE FOR ROTARY HAMMER (500G)	1



Rev.1