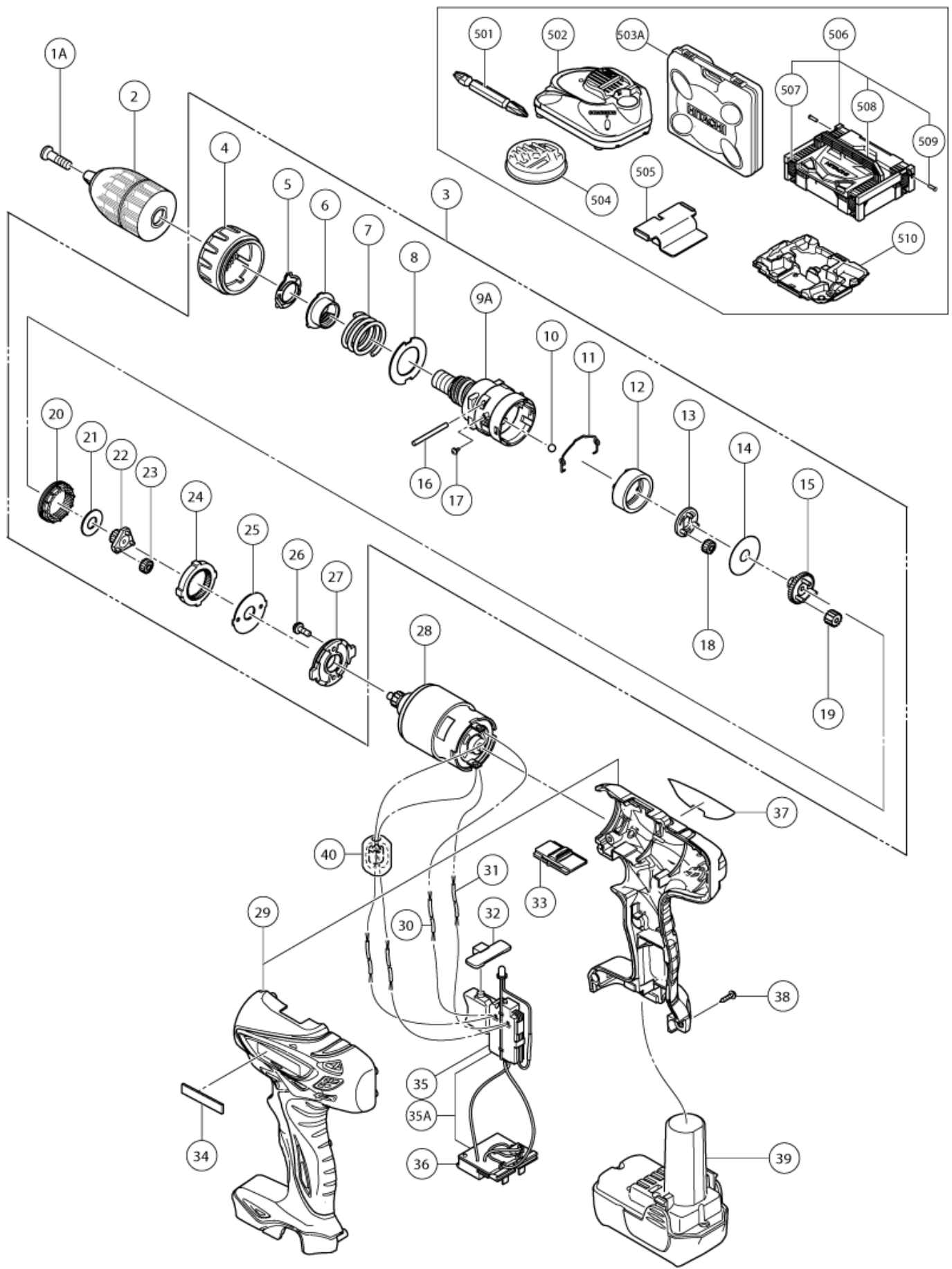


n°	Article	Quantité utilisée
1A	337426 HEXALOBULAR M5 LEFT-HAND (OLD 325616)	1
2	331602 DRILL CHUCK 10MM (W/O CHUCK WRENCH)	1
3	331324 GEAR BOX ASS'Y	1
4	331587 CLUTCH DIAL	1
5	329579 CLICK SPRING	1
6	331582 NUT	1
7	331583 SPRING	1
8	331584 THRUST PLATE	1
9A	331585 GEAR CASE	1
10	306936 STEEL BALL D5	6
11	331586 SHIFT ARM	1
12	331592 RING GEAR	1
13	331589 CARRIER	1
14	331593 WASHER (B)	1
15	331590 PINION (C)	1
16	331588 NEEDLE	2
17	330579 SCREW SET D2X3.5 (2 PCS.)	2
18	331591 PLANET GEAR (C) SET (3 PCS)	3
19	331595 PLANET GEAR (B) SET (3 PCS)	3
20	331594 SLIDE RING GEAR	1
21	331599 WASHER (C)	1
22	331596 PINION (B)	1
23	331597 PLANET GEAR (A) SET (3 PCS)	3
24	331598 FIRST RING GEAR	1
25	331600 WASHER (A)	1
26	949203 MACHINE SCREW M3X8 (10 PCS)	2
27	331601 MOTOR SPACER	1
28	331333 MOTOR DC 12 VOLT	1
29	331326 HOUSING SET (A+B)	1
32	329548 PUSHING BUTTON (A)	1
33	331332 SHIFT KNOB	1
34	330719 HITACHI LABEL	1
35A	334907 SWITCH TERMINAL SET	1
35	331330 DC-SPEED CONTROL SWITCH	1
36	331331 CONTROLLER (B)	1
38	313687 TAPPING SCREW (W/FLANGE) D3X16 (BLACK)	8
40	334855 INTERNAL WIRE FERRITE SET NEW	1
503A	337385 PLASTIC CARRYING CASE	1

n°	Article	Quantité utilisée
503	331603 PLASTIC CARRYING CASE	1
505	331086 BATTERY COVER	1
507	336472 LATCH	4
508	336473 HANDLE (HSC) NEW	1
509	336474 HINGE	2



Rev.8

形名
DS10DFL