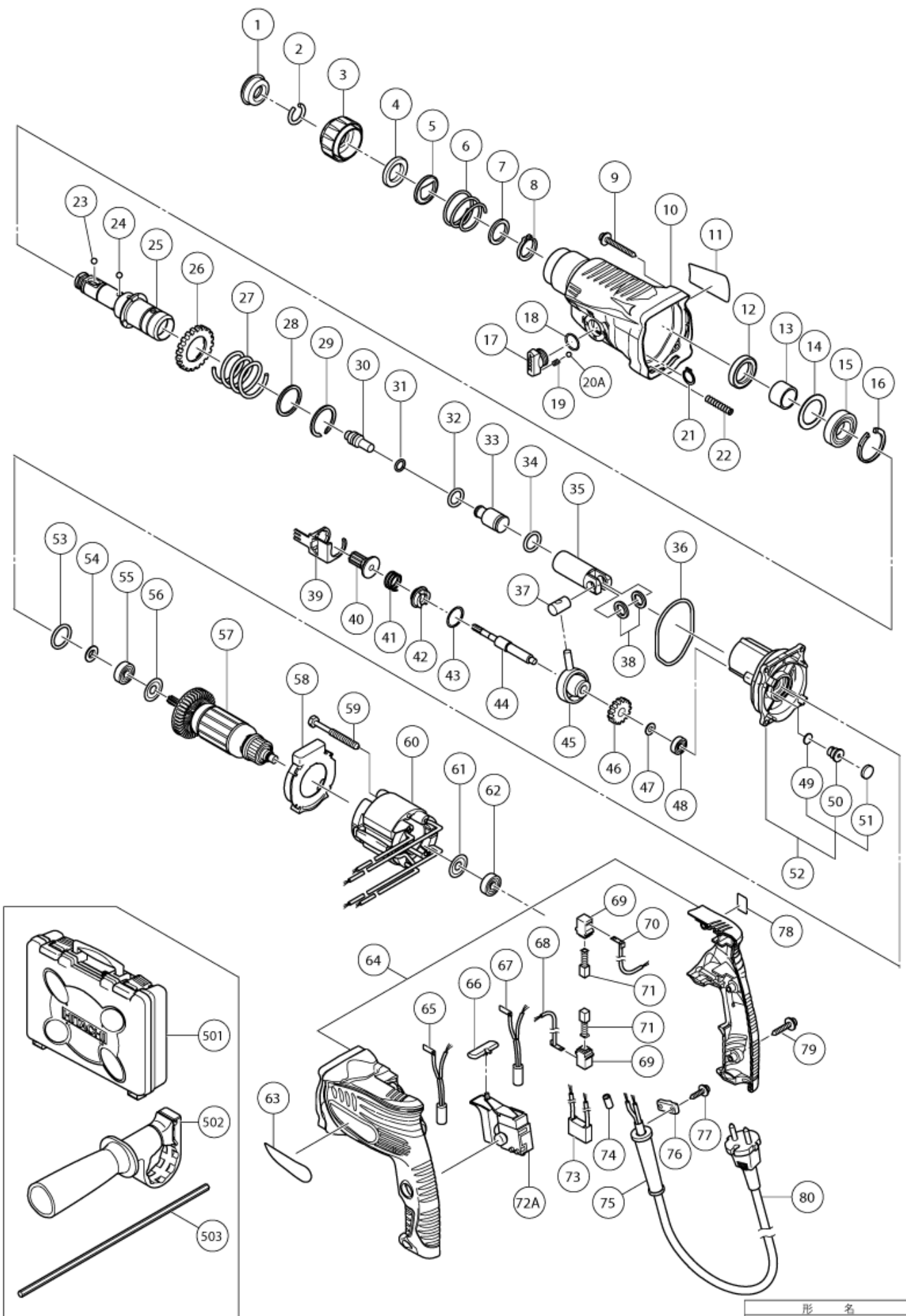


n°	Article	Quantité utilisée
1	306345 FRONT CAP	1
2	306340 STOPPER RING	1
3	325597 GRIP	1
4	327879 BALL HOLDER	1
5	324526 HOLDER PLATE (OLD 322811)	1
6	322812 HOLDER SPRING	1
7	984118 WASHER (B)	1
8	939547 RETAINING RING FOR D20 (10 PCS)	1
9	305490 TAPPING SCREW D4X30 (W/FLANGE) BLACK	4
10	331520 GEAR COVER (A)	1
12	307688 OIL SEAL 24X34X6	1
13	331301 SLEEVE	1
14	323232 FELT PACKING (B)	1
15	6904DD BALL BEARING 6904DDPS2L	1
16	322813 RETAINING RING 37MM	1
17	331303 CHANGE LEVER	1
18	319567 O-RING (S-15)	1
19	331306 SPRING (F)	1
20A	335297 STEEL BALL 5/32 (10 PCS)	1
21	331305 RETAINING RING D5	1
22	331302 SPRING (C)	1
23	959156 STEEL BALL D7.0 (10 PCS)	1
24	959154 STEEL BALL D5.556 (10 PCS) (OLD 939277Z)	3
25	331307 CYLINDER	1
26	331309 SECOND GEAR	1
27	331310 SPRING (A)	1
28	331311 WASHER (A)	1
29	320846 O-RING (I.D.26)	1
30	331312 SECOND HAMMER	1
31	301672 O-RING (B)	1
32	331308	1
33	331296 STRIKER	1
34	301670 O-RING (A)	1
35	331300 PISTON	1
36	327870 O-RING	1
37	322798 PISTON PIN	1
38	322799 WASHER (C)	2
39	331313 LOCK PLATE	1

n°	Article	Quantité utilisée
40	323181 SECOND PINION	1
41	323182 CLUTCH SPRING	1
42	331314 CLUTCH	1
43	331315 WASHER	1
44	331297 SECOND SHAFT	1
45	331298 RECIPROCATING BEARING	1
46	331299 FIRST GEAR	1
47	995634 WASHER (B)	1
48	626VVM BALL BEARING 626VVMC2ERPS2S	1
49	324543 FELT PACKING (A)	1
50	324545 VALVE	1
51	324544 FELT PACKING (B)	1
52	331521 INNER COVER ASS'Y (A)	1
53	878609 O-RING (S-24)	1
54	306312 FRINGER	1
55	609DDC BALL BEARING 609DDC3PS2-L	1
56	958915 WASHER (A)	1
57	360798E ARMATURE 220-230 VOLT	1
58	327868 FAN GUIDE	1
59	981824 HEX.HD. TAPPING SCREW D4X45	2
60	340701E STATOR 220-230 VOLT	1
60	340701C STATOR 110-120 VOLT	1
61	982631 WASHER (A)	1
62	608VVM BALL BEARING 608VVC2PS2L	1
64	331669 HOUSING HANDLE COVER SET (OLD 327881+327882)	1
65	324549 CHOKE COIL (A) BROWN	1
66	322853 PUSHING BUTTON	1
67	324551 CHOKE COIL (A) BLEU	1
68	324538 INTERNAL WIRE (A) BLUE	1
69	955203 BRUSH HOLDER	2
70	324537 INTERNAL WIRE (A) BROWN	1
71	999041 CARBON BRUSH (1 PAIR)	2
72A	335796 SWITCH (OLD 331454)	1
73	930039 NOISE SUPPRESSOR	1
74	981373 TUBE (D)	2
75	938051 CORD ARMOR D10.1	1
75	953327 CORD ARMOR D8.8	1
76	937631 CORD CLIP	1

n°	Article	Quantité utilisée
79	301653 TAPPING SCREW (W/FLANGE) D4X20 (BLACK)	3
80	500446Z CORD FOR GBR 230V	1
80	500465Z CORD 4M 2 X 1.0 H07RN-F W/PLUG 16A CEE FORM 2P+E 110 VOLT	1
80	500440Z CORD 5M 2 X 1,0 W/PLUG 13A/250V FOR GBR	1
80	500447Z CORD 2,5M 2 X 1.0 H05VV-F (OLD 500395Z)	1
80	500240Z CORD FOR USA/CAN	1
501	331439 PLASTIC CARRYING CASE DH22PH & DH22PG (OLD 327883)	1
502	324548 SIDE HANDLE	1
503	303709 DEPTH GAUGE	1
601	308471 GREASE FOR HAMMER DRILL (70G)	1
602	980927 GREASE FOR IMPACT DRILL (FG-6A) (500G)	1
608	981122 SPECIAL SCREW M6X22	1
614	971799 ANCHOR SETTING ADAPTER B W1/4" (MANUAL)	1
615	971800 ANCHOR SETTING ADAPTER B W5/16" (MANUAL)	1
617	971802 ANCHOR SETTING ADAPTER B W1/2" (MANUAL)	1
618	971803 ANCHOR SETTING ADAPTER B W5/8" (MANUAL)	1
619	944477 COTTER	1
630	930515 CHUCK WRENCH 10G	1
633	303335 RUBBER CAP	1
635	320859 SYRINGE (BLOW-OUT BULB TYPE)	1
636	303617 TAPER SHANK ADAPTER (SDS PLUS) NO.1	1
637	303618 TAPER SHANK ADAPTER (SDS PLUS) NO.2	1
638	303619 A-TAPER SHANK ADAPTER (SDS PLUS)	1
645	306370 ADAPTER FOR SLENDER SHAFT (SDS PLUS)	1
653	971787 DUST CUP	1
654	931844 STOPPER	1
655	306885 DUST COLLECTOR (B) ASS'Y	1
656	306910 SOCKET ADAPTOR (B)	1
657	986802 DUST COLLECTOR ASS'Y	1
659	986804 @ SEAL COVER NEW	1
660	948310 RETAINING RING FOR D30 SHAFT	1
662	959150 STEEL BALL D6.35 (10 PCS.)	1
664	986806 SOCKET	1



Rev.3

形名
DH22PH